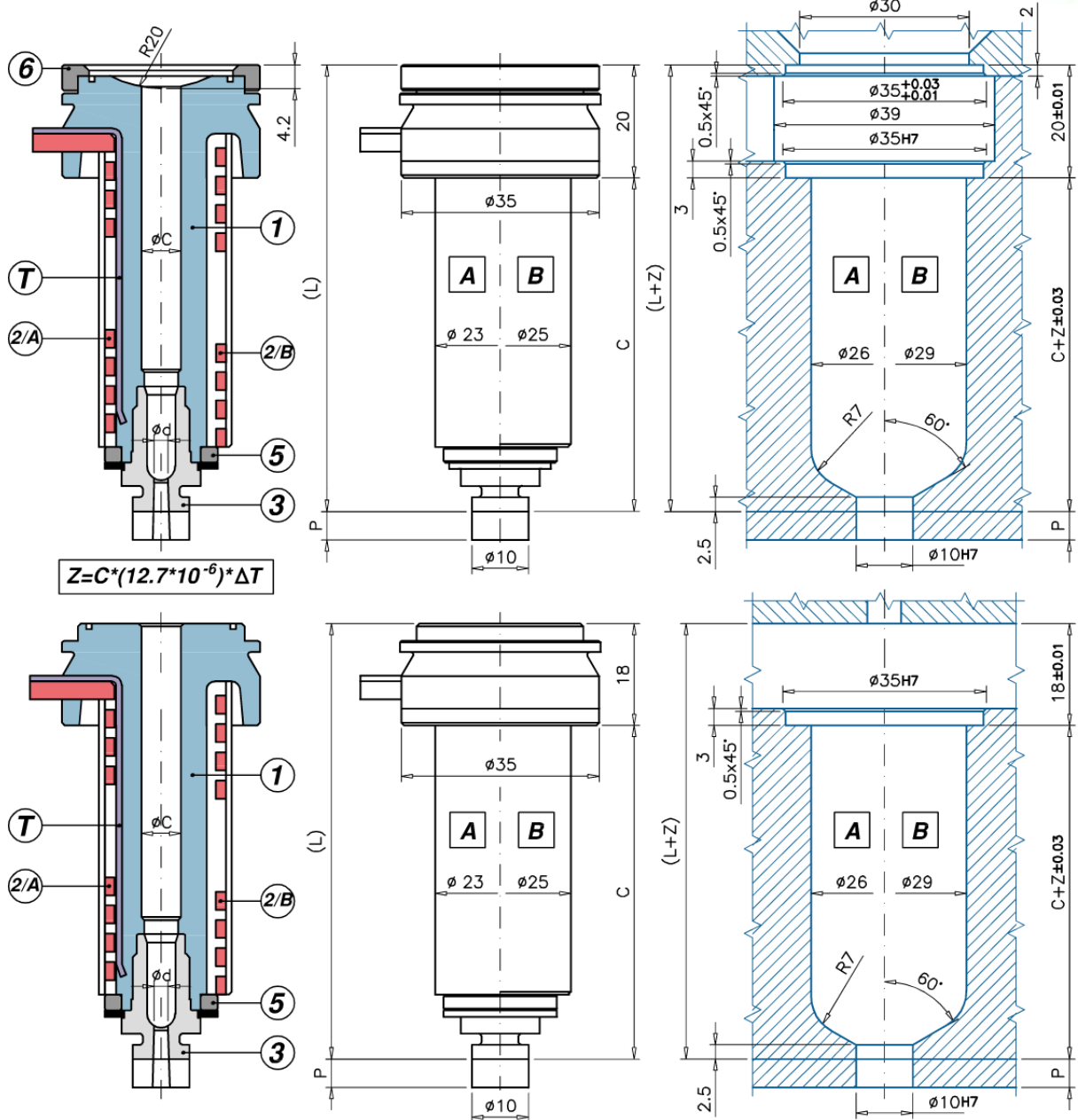


S Applicazione Impronta Singola



M Applicazione impronta multipla

Ugello	C	S		M		1	A	B	T	-P		0/1		5	8
		L	6	L	7					4/0	4/1				
UGBE3001	S/M A/B -/P 3	59	79	UGAS3530	77	UGCR3001	REPNSP3001	REBU4501FU	S100851000J	UGBC30	UGBC30P			UGBE300AR	
UGBE3001	S/M A/B -/P 5	59	79	UGAS3530	77	UGCR3001	REPNSP3001	REBU4501FU	S100851000J	UGBC305	UGBC305P			UGBE300AR	
UGBE3002	S/M A/B -/P 3	89	109	UGAS3530	107	UGCR3002	REPNSP3002	REBU4502FU	S101051000J	UGBC30	UGBC30P			UGBE300AR	
UGBE3002	S/M A/B -/P 5	89	109	UGAS3530	107	UGCR3002	REPNSP3002	REBU4502FU	S101051000J	UGBC305	UGBC305P			UGBE300AR	
UGBE3003	S/M A/B -/P 3	119	139	UGAS3530	137	UGCR3003	REPNSP3003	REBU4503FU	S101051000J	UGBC30	UGBC30P			UGBE300AR	
UGBE3003	S/M A/B -/P 5	119	139	UGAS3530	137	UGCR3003	REPNSP3003	REBU4503FU	S101051000J	UGBC305	UGBC305P			UGBE300AR	
UGBE3004	S/M A -/P 3	159	179	UGAS3530	177	UGCR3004	REPNSP3004		S101551000J	UGBC30	UGBC30P			UGBE300AR	
UGBE3004	S/M A -/P 5	159	179	UGAS3530	177	UGCR3004	REPNSP3004		S101551000J	UGBC305	UGBC305P			UGBE300AR	

- 1 = Corpo ugello
- 2/A = Resistenza spiralata
- 2/B = Resistenza in fusione
- 3 = Boccola
- 3/P = Boccola con prolungamento lavorabile
- 5 = Anello in titanio
- 6 = Anello di centraggio
- 7 = O-RING

ØC = Standard 6 - A richiesta: 7
 Ød = standard: 1,5 - A richiesta: 0,8 + 2,5
 P = standard: 20 - A richiesta: 0,5 + 19,9
 T = Termocoppia tipo J

