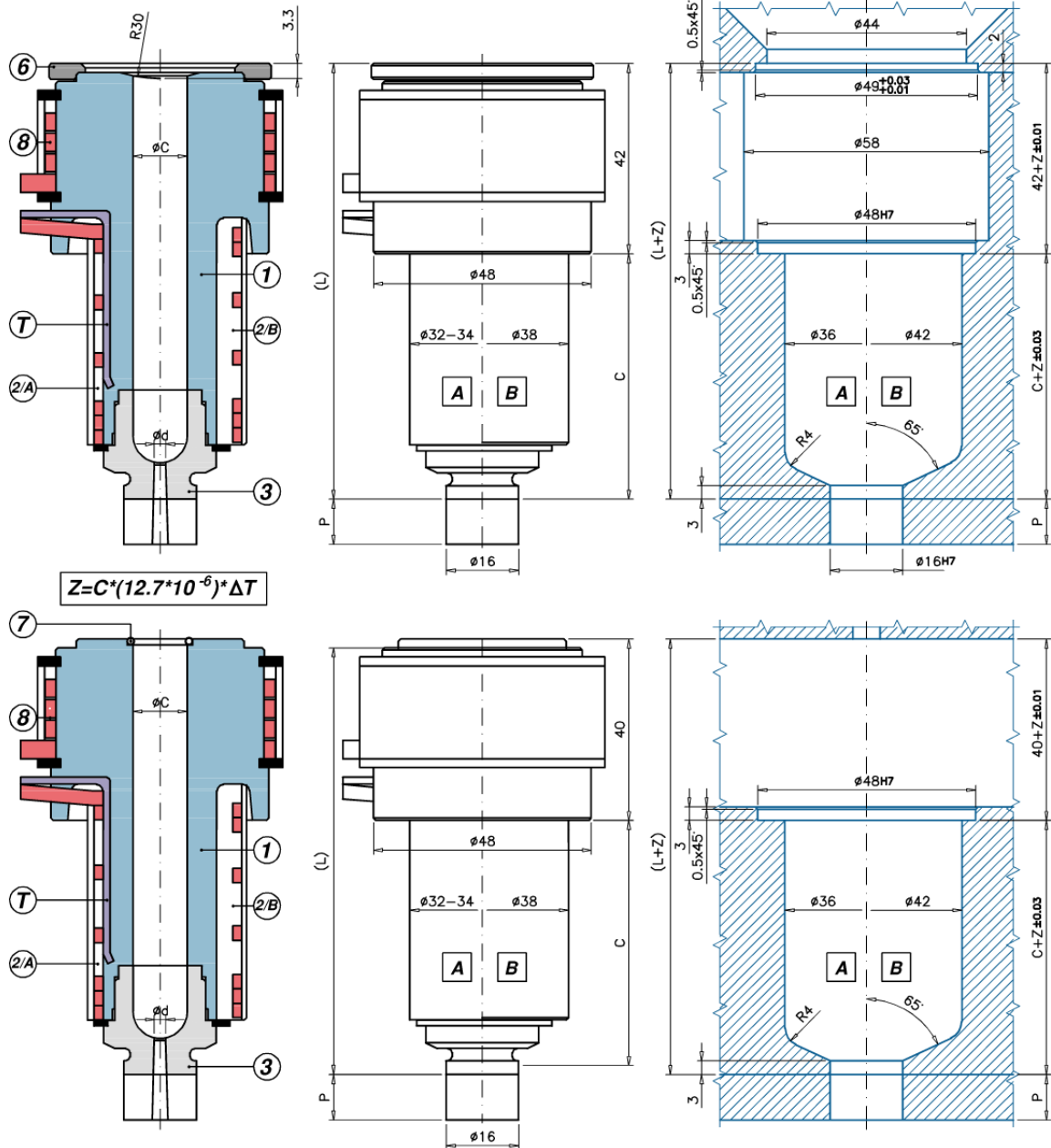


## S Applicazione Impronta Singola



## M Applicazione impronta multipla

Ugello	C	S		M		1	A		B	-P		0/1		5	8
		L	6	L	7		2/A	T		2/B	3	3/P	4/0		
UGBE5501	S/M A/B -/P 3	54	96	UGAS4937	94	UGACOR14	UGCR5501	REPNSP5001	S150851000J	REBU4001	UGBC50	UGBC50P			REPTS550
UGBE5501	S/M A/B -/P 5	54	96	UGAS4937	94	UGACOR14	UGCR5501	REPNSP5001	S150851000J	REBU4001	UGBC505	UGBC505P			REPTS550
UGBE5502	S/M A/B -/P 3	84	126	UGAS4937	124	UGACOR14	UGCR5502	REPNSP5002	S151051000J	REBU4002	UGBC50	UGBC50P			REPTS550
UGBE5502	S/M A/B -/P 5	84	126	UGAS4937	124	UGACOR14	UGCR5502	REPNSP5002	S151051000J	REBU4002	UGBC505	UGBC505P			REPTS550
UGBE5503	S/M A/B -/P 3	114	156	UGAS4937	154	UGACOR14	UGCR5503	REPNSP5003	S151051000J	REBU4003	UGBC50	UGBC50P			REPTS550
UGBE5503	S/M A/B -/P 5	114	156	UGAS4937	154	UGACOR14	UGCR5503	REPNSP5003	S151051000J	REBU4003	UGBC505	UGBC505P			REPTS550
UGBE5504	S/M A/B -/P 3	164	206	UGAS4937	204	UGACOR14	UGCR5504	REPNSP5004	S151551000J	REBU4004	UGBC50	UGBC50P			REPTS550
UGBE5504	S/M A/B -/P 5	164	206	UGAS4937	204	UGACOR14	UGCR5504	REPNSP5004	S151551000J	REBU4004	UGBC505	UGBC505P			REPTS550
UGBE5505	S/M A/B -/P 3	214	256	UGAS4937	254	UGACOR14	UGCR5505	REPNSP5005	S151551000J	REBU4005	UGBC50	UGBC50P			REPTS550
UGBE5505	S/M A/B -/P 5	214	256	UGAS4937	254	UGACOR14	UGCR5505	REPNSP5005	S151551000J	REBU4005	UGBC505	UGBC505P			REPTS550

- 1 = Corpo ugello
- 2/A = Resistenza spiralata
- 2/B = Resistenza in fusione con TCJ
- 3 = Boccola
- 3/P = Boccola con prolungamento lavorabile
- 5 = Anello in titanio
- 6 = Anello di centraggio

- 7 = O-RING
- 8 = Resistenza spiralata con TCJ

$\varnothing C$  = Standard 12 - A richiesta: 13  
 $\varnothing d$  = standard: 2,0 - A richiesta: 0,8 ÷ 6,0  
 P = standard: 10 - A richiesta: 0,5 ÷ 24,9  
 T = Termocoppia tipo J

